

DESCRIPTION

AMC MODEL SWM-DJV-1DT-2ATT OPTION: 100M01, SMC-CTL, PB IS AN ABSORPTIVE/NON-REFLECTIVE SINGLE POLE SINGLE THROW SWITCH MODULE DESIGNED TO OPERATE BETWEEN THE 100 TO 1000 MHz FREQUENCY RANGE.

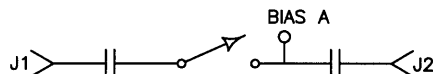
SPECIFICATIONS

- FREQUENCY RANGE: 100 TO 1000 MHz
- INSERTION LOSS: 5.0 dB MAXIMUM
- ISOLATION: 50 dB MINIMUM
- VSWR: 2.0:1
- RISE TIME: 6 nSec MAXIMUM
- FALL TIME: 6 nSec MAXIMUM
- DELAY ON: ≤ 75 nSec MAXIMUM
- DELAY OFF: ≤ 75 nSec MAXIMUM
- POWER INPUT: ≤ +17 dBm
- CONTROL: TTL LOGIC "0" = ON
TTL LOGIC "1" = OFF
- POWER SUPPLY: -15V @ 25 mA MAXIMUM
- CONNECTORS:
RF: SMA FEMALE
CONTROL: SOLDER PIN
- SIZE: 1.00" (L) x 1.00" (W) x 0.50" (H)

OPTIONS:

- 100M01: OPTIMIZED FOR 100 TO 1000 MHz FREQUENCY RANGE
- SMC-CTL: SMC CONTROL CONNECTOR
- PB: SPECIALIZED FOR PETE BOHLEY

BLOCK DIAGRAM



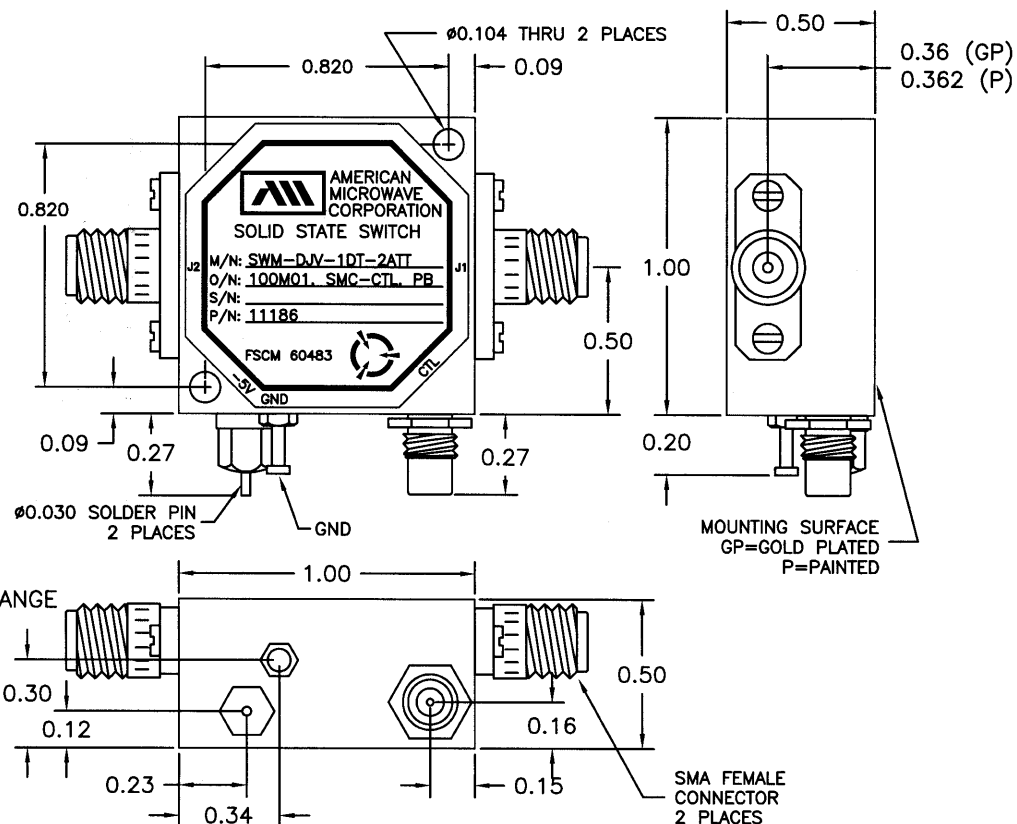
ENVIRONMENTAL RATINGS:

- TEMPERATURE: -55°C TO +85°C (OPERATING)
-65°C TO +125°C (STORAGE)
- HUMIDITY: MIL-STD-202F, METHOD 103B COND. B
- SHOCK: MIL-STD-202F, METHOD 213B COND. B
- VIBRATION: MIL-STD-202F, METHOD 204D COND. B
- ALTITUDE: MIL-STD-202F, METHOD 105C COND. B
- TEMPERATURE CYCLE: MIL-STD-202F, METHOD 107D COND. A

NOTE: SPECIFICATIONS WILL VARY OVER OPERATING TEMPERATURE
NOTE: THE ABOVE SPECIFICATIONS ARE SUBJECT TO CHANGE OR REVISION

ALL DIMENSIONS ARE IN INCHES
TOLERANCES:
X.XX ±0.020
X.XXX ±0.010

REVISIONS				
ZONE	REV.	DESCRIPTION	DATE	APPROVED
-	-	ORIGINAL RELEASE JOB# 411281-1PE	2/9/05	



AMERICAN MICROWAVE CORPORATION

7311-G GROVE ROAD
FREDERICK, MARYLAND 21704 USA
TEL: 301-662-4700 FAX: 301-662-4938
WEBSITE: www.americanmicrowavecorp.com
E-MAIL: sales@americanmicrowavecorp.com
ISO 9001:2000 CERTIFIED

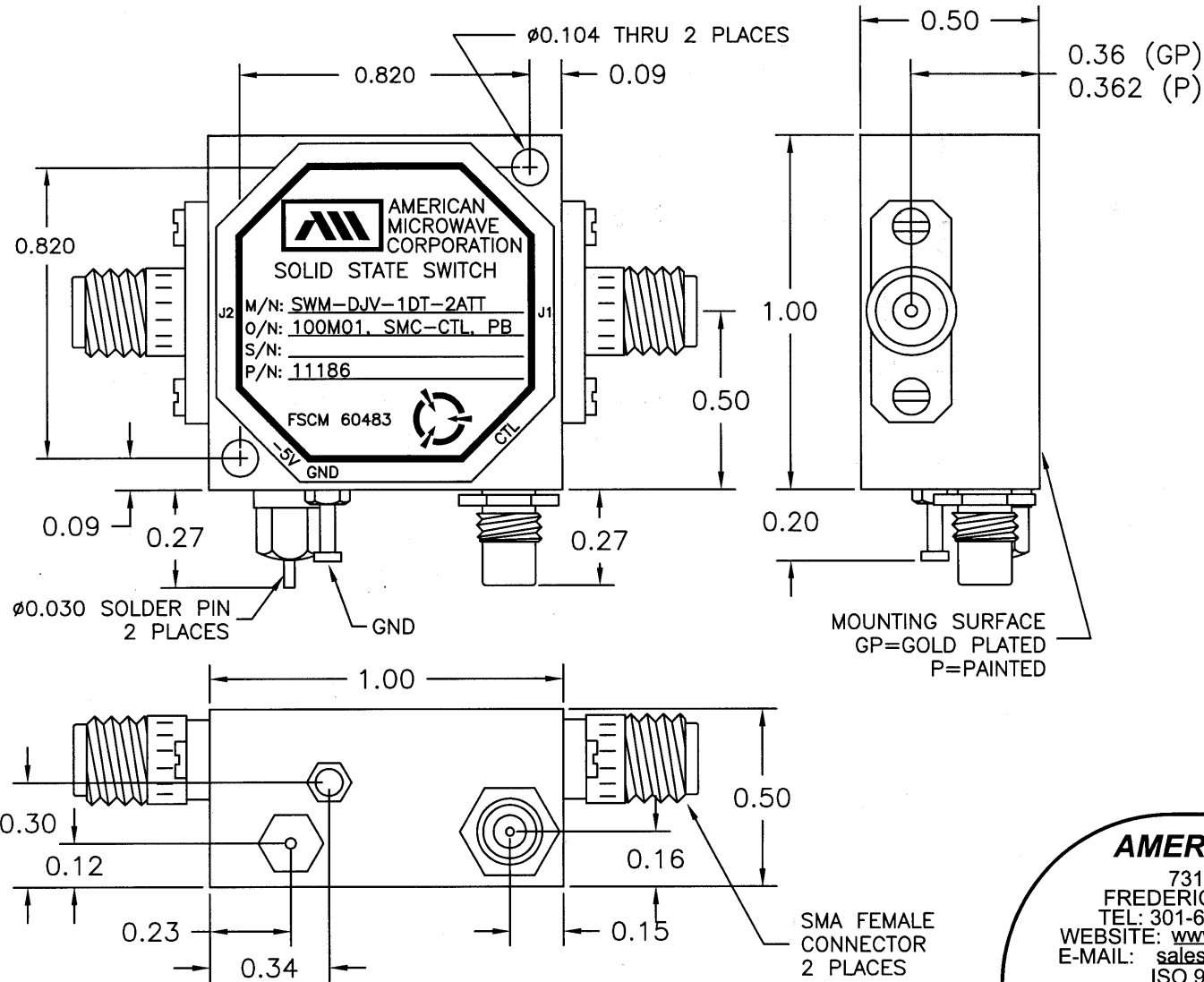


APPROVALS		DATE	TITLE			
DRAWN <i>JDJ</i>		2/9/05	PRODUCT FEATURE SWM-DJV-1DT-2ATT OPTION: 100M01, SMC-CTL, PB 100 - 1000 MHz, SINGLE POLE SINGLE THROW SWITCH			
CHECKED			SIZE	FSCM NO.	DWG NO.	REV.
			A	60483	100-7328	-
ISSUED			SCALE N:S		SHEET 1 OF 3	

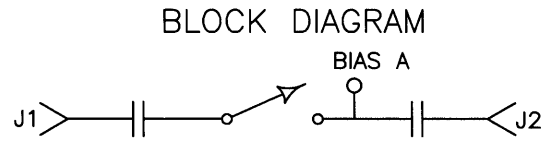
DESCRIPTION

AMC MODEL SWM-DJV-1DT-2ATT OPTION: 100M01, SMC-CTL, PB IS AN ABSORPTIVE/NON-REFLECTIVE SINGLE POLE SINGLE THROW SWITCH MODULE DESIGNED TO OPERATE BETWEEN THE 100 TO 1000 MHz FREQUENCY RANGE.

REVISIONS				
ZONE	REV.	DESCRIPTION	DATE	APPROVED
	-	ORIGINAL RELEASE JOB# 411281-1PE	2/9/05	



MECHANICAL OUTLINE



ALL DIMENSIONS ARE IN INCHES
TOLERANCES:
X.XX ±0.020
X.XXX ±0.010

AMERICAN MICROWAVE CORPORATION

7311-G GROVE ROAD
FREDERICK, MARYLAND 21704 USA
TEL: 301-662-4700 FAX: 301-662-4938
WEBSITE: www.americanmicrowavecorp.com
E-MAIL: sales@americanmicrowavecorp.com
ISO 9001:2000 CERTIFIED



APPROVALS		DATE	TITLE		
DRAWN <i>gdf</i>		2/9/05	MECHANICAL OUTLINE SWM-DJV-1DT-2ATT OPTION: 100M01, SMC-CTL, PB 100 - 1000 MHz, SINGLE POLE SINGLE THROW SWITCH		
CHECKED			SIZE A	FSCM NO. 60483	DWG NO. 100-7328
ISSUED					REV. -
SCALE N:S				SHEET 2 OF 3	